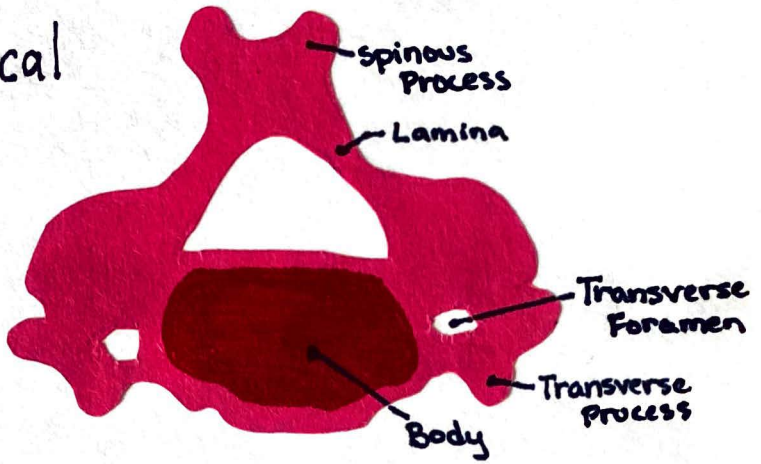
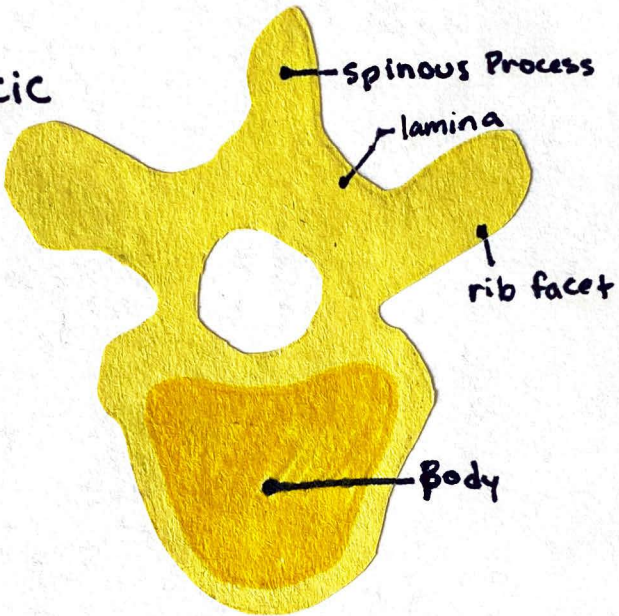


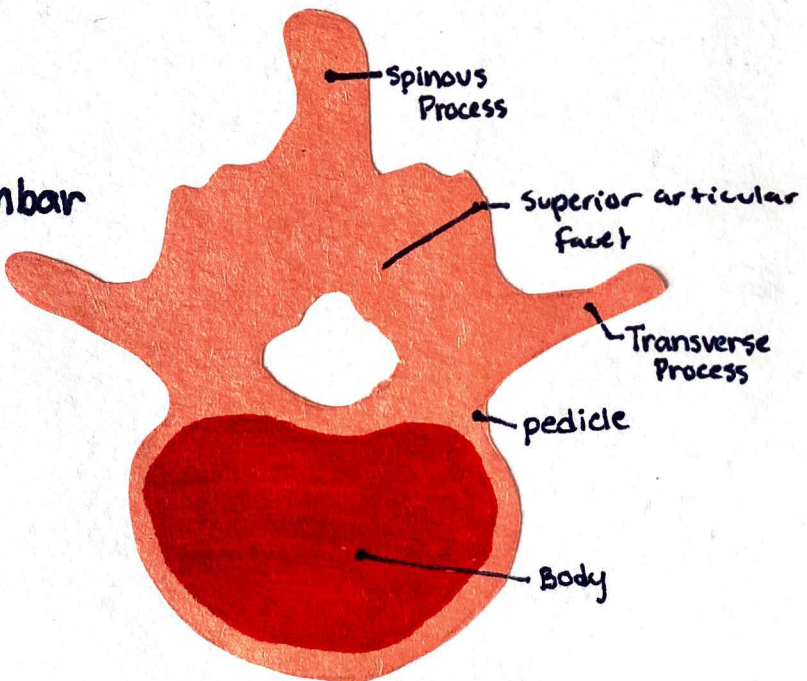
Cervical



Thoracic



Lumbar



Extension &
Lateral Flexion

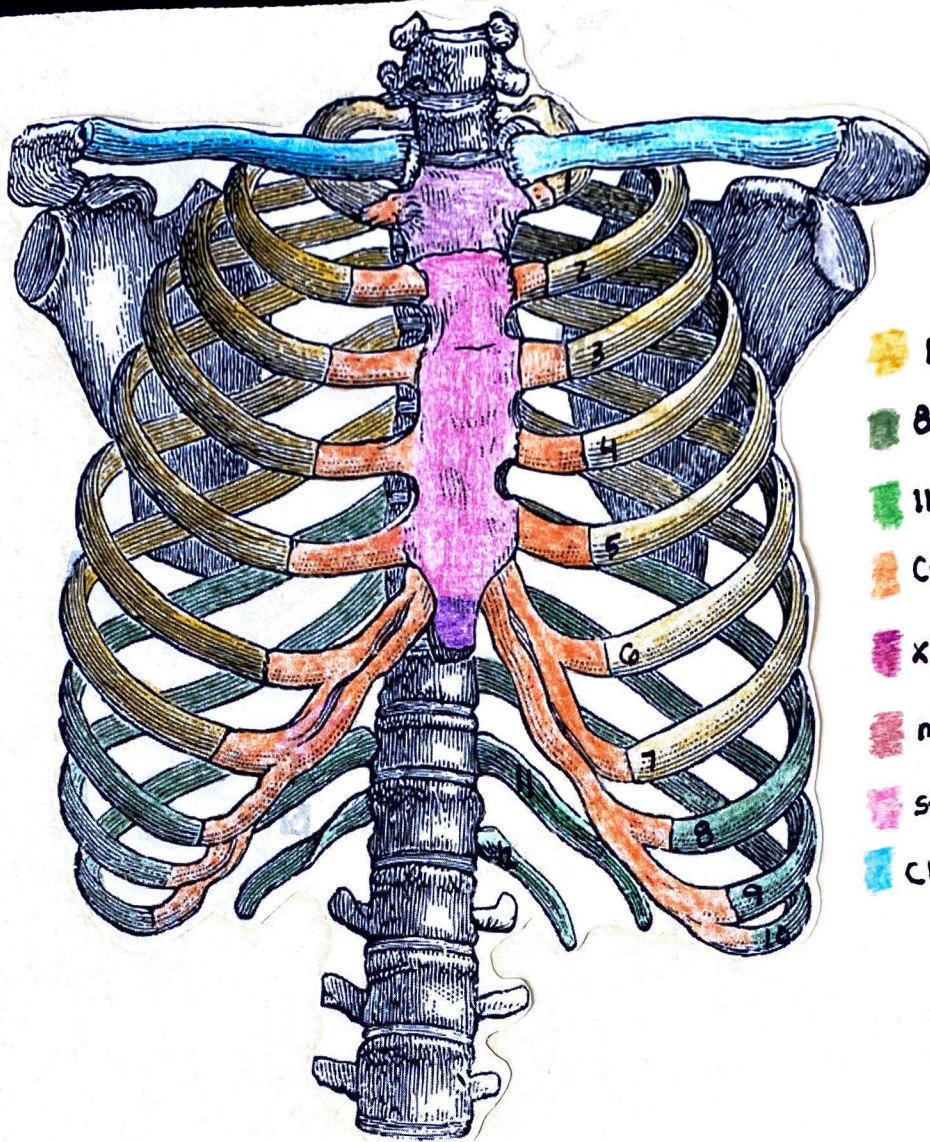
Rotation &
Lateral Flexion

Extension &
Rotation

Flexion

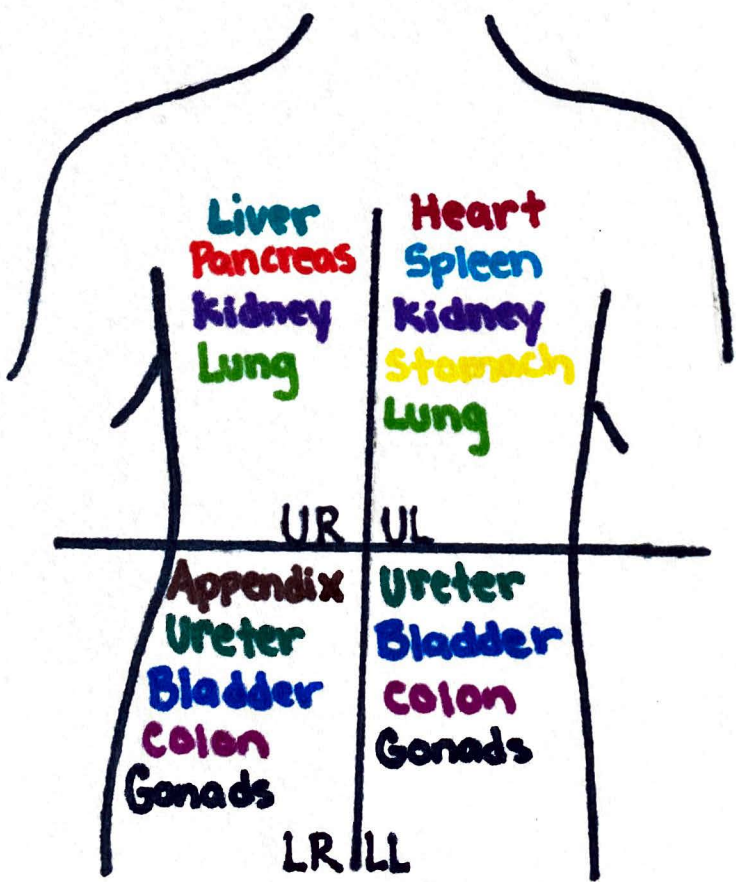
Lateral Flexion

Compression



- 1-7 True
- 8-10 False
- 11-12 Floating
- Costal Cartilage
- Xiphoid Process
- manubrium
- sternal Body
- Clavicle

STAPLES



Inspiration
(inhale)

rotation &
Lateral Flexion

expiration
(exhale)

Compression

Expands the
Rib Cage

Flexion